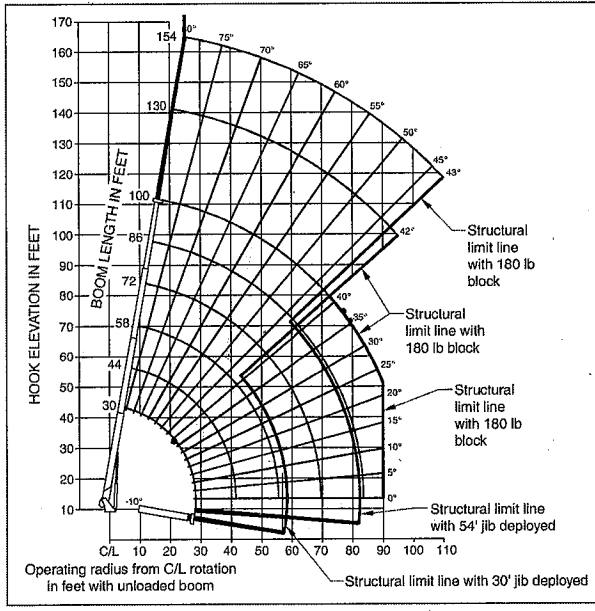




capacities

Load Rating Chart: Series 14100H (30.5 m) Boom with 30-54 ft (9.1-16.45 m) Jib / Full-Span Outrigger 24 ft 6 in (7.5 m)



CAUTION:

- Do not operate crane booms, jib extensions, any accessories or loads within 10 ft (3m) of live power lines or other conductors of electricity.
- Jib and boom capacities shown are maximum for each section.
- Do not exceed capacities at reduced radii.
- Load ratings shown on the appropriate charts are maximum allowable loads with the crane mounted on a factory-approved truck and all outriggers at either full span or at mid span range and set on a firm level surface so that the crane is level and all tires are suspended.
- Always level the crane with the level indicator located on the crane.
- The operator must reduce load to allow for factors such as wind, ground conditions, operating speeds and their effects on freely suspended loads.
- Overloading this crane may cause structural collapse or instability.
- Weights on any accessories attached to the boom or loadline must be deducted from the load chart capacities.
- Do not exceed jib capabilities at any reduced boom lengths.
- Do not deadhead lineblock against boom tip when extending boom or winching up.
- Keep at least three wraps of loadline on drum at all times.
- Use only specified cable with this machine.

**SERIES 14100H
WITH
30-54 FT
(9.1-16.45 M)
JIB / FULL-SPAN
OUTRIGGER
24 FT 6 IN (7.5 M)**

NOTE:

1. Operate with jib by radius when main boom is fully extended. If necessary increase boom angle to maintain loaded radius.
2. Operate with jib by boom angle when main boom is not fully extended. Do not exceed rated jib capacities at any reduced boom lengths.

LOADLINE EQUIPMENT DEDUCT

Downhaul weight.....	180 lb (81.6 kg)
One sheave block.....	375 lb (170 kg)
Two sheave block.....	640 lb (290 kg)
Three sheave block.....	870 lb (395 kg)
Four sheave block.....	970 lb (440 kg)

Load Rating Chart: Series 14100H (30.5 m) Boom with 30-54 ft (9.1-16.45 m) Jib / Full-Span Outrigger 24 ft 6 in (7.5 m)

LOAD RADIUS (FEET)	LOADED BOOM ANGLE	30FT BOOM (lb)	LOADED BOOM ANGLE	A 48FT BOOM (lb)	LOADED BOOM ANGLE	B 38FT BOOM (lb)	LOADED BOOM ANGLE	C 22FT BOOM (lb)	LOADED BOOM ANGLE	D 30FT BOOM (lb)	LOADED BOOM ANGLE	100FT BOOM (lb)
6	79.1	86,000										
8	74.9	49,200										
10	70.6	42,200	77.2	37,900								
12	66.3	36,600	74.9	33,400	79.2	29,580						
14	61.7	34,200	72.1	29,400	77.1	26,650	80	22,050				
16	56.8	30,350	69.2	26,900	75.1	24,550	78.6	21,050				
20	46	23,550	63.3	21,400	70.8	19,250	75.3	18,050	78.4	16,800	80	11,800
25	27.4	16,700	55.2	17,400	65.3	16,050	71	14,650	74.9	13,700	77.3	10,950
30			46.1	13,900	59.5	13,550	66.7	12,650	71.3	11,450	74.5	10,650
35			35	10,350	53.1	10,650	61.9	10,550	67.7	9,900	71.8	9,150
40			20	8,000	46.8	8,250	57.6	8,400	64.3	8,550	68.4	8,050
45					38.8	6,500	52.4	6,650	60.1	6,750	65.3	6,850
50					29	5,150	46.7	5,300	55.9	5,400	61.9	5,500
55					12.3	4,150	40.4	4,250	51.5	4,400	58.3	4,450
60							33.2	3,400	46.7	3,550	54.6	3,600
65								23.8	2,750	41.5	2,850	2,900
70									35.7	2,250	46.6	2,300
75									28.8	1,750	42.2	1,800
80									19.6	1,350	37.3	1,400
85											31.8	1,050
90											25.2	700
	0	11,400	0	7,300	0	4,000	0	1,850	0	900		
	ADD TO CAPACITIES WHEN NO JIB STOWED (lb)	800		600		450		350		300		250

LOAD RADIUS (FEET)	LOADED BOOM ANGLE	30FT JIB (lb)	LOADED BOOM ANGLE	54FT JIB (lb)
30	78.4	5,900		
35	76.5	5,450	78.5	2,650
40	74.6	5,400	76.9	2,600
45	72.4	5,100	75.2	2,500
50	70.1	4,600	73.4	2,400
55	67.8	4,250	71.6	2,300
60	65.5	3,900	69.8	2,200
65	62.7	3,200	67.9	2,100
70	59.9	2,600	66	2,000
75	57.1	2,050	64	1,850
80	54.1	1,650	61.8	1,750
85	51.1	1,250	59.6	1,600
90	47.9	950	57.4	1,500
95	44.5	650	54.8	1,200
100			52.2	950
105			49.4	700
110			46.6	500

*SHADED AREAS ARE STRUCTURALLY LIMITED CAPACITIES

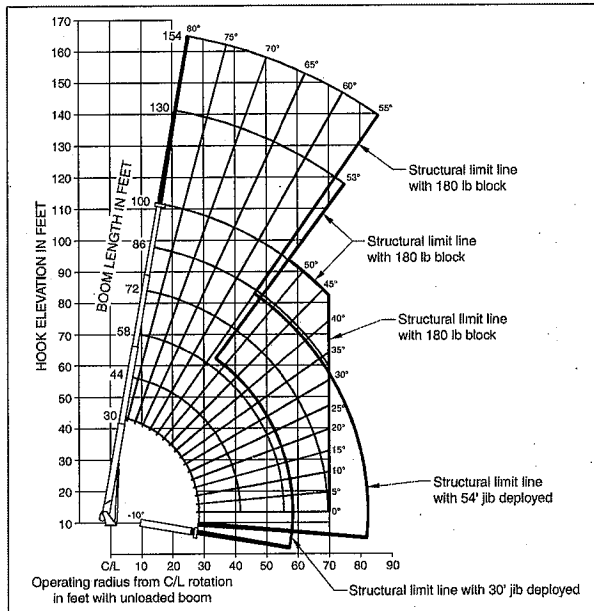
THIS CHART IS ONLY A GUIDE AND SHOULD NOT BE USED TO OPERATE THE CRANE. The individual crane's load chart, operating instructions and other instructional plates must be read and understood prior to operating the crane.

1400H



capacities

Load Rating Chart: Series 14100H (33.5 m) Boom With 30-54 ft (9.1-16.45 m) Jib / Mid-Span Outrigger 18 ft 6 in (5.63 m)



CAUTION:

- Do not operate crane booms, jib extensions, any accessories or loads within 10 ft (3m) of live power lines or other conductors of electricity.
- Jib and boom capacities shown are maximum for each section.
- Do not exceed capacities at reduced radii.
- Load ratings shown on the load rating charts are maximum allowable loads with the outriggers properly extended and the outrigger lock pins engaged on a firm, level surface and the crane leveled and mounted on a factory recommended truck.
- Always level the crane with the level indicator located on the crane.
- The operator must reduce load to allow for factors such as wind, ground conditions, operating speeds and their effects on freely suspended loads.
- Overloading this crane may cause structural collapse or instability.
- Weights on any accessories attached to the boom or loadline must be deducted from the load chart capacities.
- Do not exceed jib capabilities at any reduced boom lengths.
- Do not deadhead lineblock against boom tip when extending boom or winching up.
- Keep at least three wraps of loadline on drum at all times.
- Use only specified cable with this machine.

**SERIES 14100H
BOOM WITH
30-54 FT
(9.1-16.45 M)
JIB / MID-SPAN
OUTRIGGER
18 FT 6 IN (5.63 M)**

LOADLINE EQUIPMENT DEDUCT

Downhaul weight.....180 lb (81.6 kg)
One sheave block375 lb (170 kg)
Two sheave block.....640 lb (290 kg)
Three sheave block.....870 lb (395 kg)
Four sheave block.....970 lb (440 kg)

NOTE:

- Operate with jib by radius when main boom is fully extended. If necessary increase boom angle to maintain loaded radius.
- Operate with jib by boom angle when main boom is not fully extended. Do not exceed rated jib capacities at any reduced boom lengths.

Load Rating Chart: Series 14100H (33.5 m) Boom With 30-54 ft (9.1-16.45 m) Jib / Mid-Span Outrigger 18 ft 6 in (5.63 m)

LOAD RADIUS (FEET)	LOADED BOOM ANGLE	30FT BOOM (lb)	LOADED BOOM ANGLE	A 44FT BOOM (lb)	LOADED BOOM ANGLE	B 58FT BOOM (lb)	LOADED BOOM ANGLE	C 72FT BOOM (lb)	LOADED BOOM ANGLE	D 86FT BOOM (lb)	LOADED BOOM ANGLE	100FT BOOM (lb)
6	79.1	58,600										
8	74.9	49,200										
10	70.6	42,200	77.2	37,900								
12	66.3	38,600	74.9	33,400	79.2	29,550						
14	61.7	34,200	72.1	29,400	77.1	26,550	80.2	23,050				
16	56.8	30,350	69.2	26,900	75.1	24,550	78.6	21,050				
20	45.9	19,650	63.2	20,400	70.8	19,250	75.3	18,050	78.4	16,800	80	1,600
25	27.4	12,450	54.9	13,150	65.1	13,450	70.9	13,600	74.9	13,700	77.3	10,950
30			45.8	9,150	59.5	9,450	66.3	9,550	71.1	9,700	74.2	9,850
35			35.7	6,550	53	6,850	62	7,000	67.5	7,100	71.4	7,250
40			19.4	4,850	46.6	5,150	57.1	5,300	63.6	5,400	68	5,450
45					38.7	3,850	51.9	4,000	59.5	4,100	64.6	4,150
50					28.8	2,850	46.2	3,000	55.3	3,100	61.1	3,150
55					12	2,050	40	2,200	50.9	2,300	57.6	2,350
60							32.7	1,550	46.1	1,650	53.9	1,700
65							23.4	1,050	41	1,150	50.1	1,200
70									35.2	700	46	750
	0	10,000	0	4,650	0	1,850	0	850				
		ADD TO CAPACITIES WHEN NO JIB STOWED (lb)		800	600	450		350		300		250

LOAD RADIUS (FEET)	LOADED BOOM ANGLE	30FT JIB (lb)	LOADED BOOM ANGLE	54FT JIB (lb)
30	78.4	5,500		
35	76.5	5,450	78.5	2,650
40	74.6	5,400	76.9	2,600
45	72.1	4,450	75.2	2,500
50	69.5	3,450	73.4	2,400
55	66.8	2,650	71.6	2,300
60	64.2	1,950	69.8	2,200
65	61.5	1,400	67.9	2,050
70	58.7	950	65.5	1,600
75	55.8	600	63	1,200
80			60.6	850
85			58.1	550

*SHADED AREAS ARE STRUCTURALLY LIMITED CAPACITIES

THIS CHART IS ONLY A GUIDE AND SHOULD NOT BE USED TO OPERATE THE CRANE. The individual crane's load chart, operating instructions and other instructional plates must be read and understood prior to operating the crane.

1400H